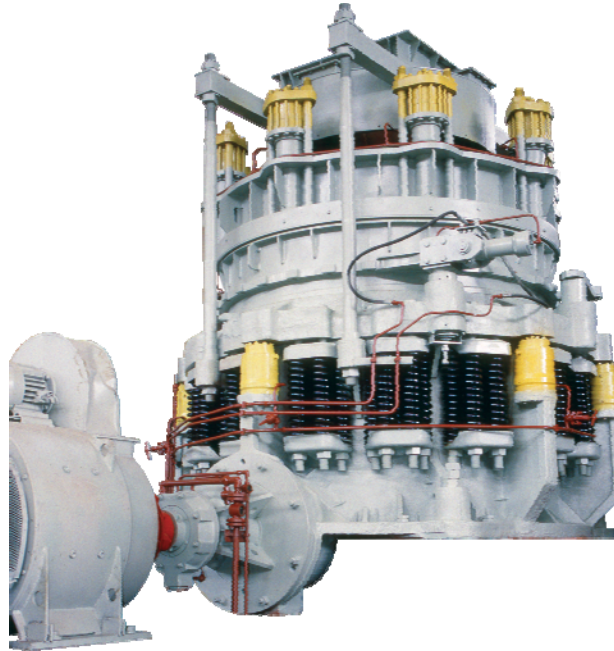


Mining and mineral-processing equipment Cone-type crushers



Based on the study conducted on the need in crushing machinery a number of basic modifications has been developed to process materials with lumps up to 1200 mm and output of 150 to 2000 m³/hr.

Specification

Parameter	Crusher type					
	КСД-2200Гр	КСД-2200Т	КМД-2200Г1	КМД-2200Г2	ККД-1500/180-2ГРЦ	КВКД-1450/ 180
Charging slot width, mm	350	275	100	85	1500	1450
Max. lump size, mm	300	250	85	80	1200	1200
Discharge slot adjusting range, mm	30-60	15-30	5-15	8-12	180	180*
Output, m ³ /hr	360-610	180-360	170-230	150	1550	2000
Main drive power, kW	250	250	250	315	2x315	500
Structural weight (without spares), ton	109**	101(111**)	103(113**)	110**	455	331

* discharge slot is not adjustable;

** with remote adjusting of discharge slot.

Mining and mineral-processing equipment Cone-type crushers



Cone-type crusher КРД-700/75

Primary and reduction cone-type crushers

Specification

Parameter	Crusher type				
	КВКД-1450/180	ККД-1500/180	ККД-1500/230	КРД-700/75	КРД-700/100
Charging slot width, mm	1450	1500	1500	700	700
Max. lump size, mm	1200	1200	1200	550	550
Rated size of discharge slot in profile spread phase, mm	180	180	230	75	100
Capacity at discharge slot rated width on an ore with ultimate compressive strength of 100-150 MPa and moisture content of 4%, m ³ /hr	2000	1550	2000	400	780
Crushing material compression resistance, MPa, max.	250				
Discharge slot adjustment	hydraulic* or mechanical				
Main drive power, kW	2x400	1x400 or 2x315	2x400	1x250 or 1x315	400
Voltage input, V	6000				
Type of current	alternating, 50 Hz				

*) Crushers can be fitted with automated system of discharge slot adjustment.

Mining and mineral-processing equipment Cone-type crushers

Secondary and finishing cone-type crushers

Crushing cone base diameter 1750 mm

Specification

Parameter	Crusher type			
	КСД-1750Г-Д	КСД-1750Гр-Д	КМД-1750Г-Д	КМД-1750Гр-Д
Charging slot width at open side, mm	200	250	80	130
Discharge slot width adjustment range in profile spread phase, mm	15-30	20-80	5-15	9-20
Discharge slot width difference in four points, mm	6	8	4	5
Max. feed lump size, mm	160	200	70	100
Output with material with ultimate compressive strength of 100-150 MPa and moisture content of 4%, in open cycle, m ³ /hr	100-190	170-320	86-110	95-130
Crushing material compression resistance, MPa, max.	300			
Main drive power, kW	160			
Voltage input, V	380			
Type of current	alternating, 50 Hz			
Adjustment of discharge slot	thread-type, mechanized, remote			

Mining and mineral-processing equipment Cone-type crushers

Secondary and finishing cone-type crushers

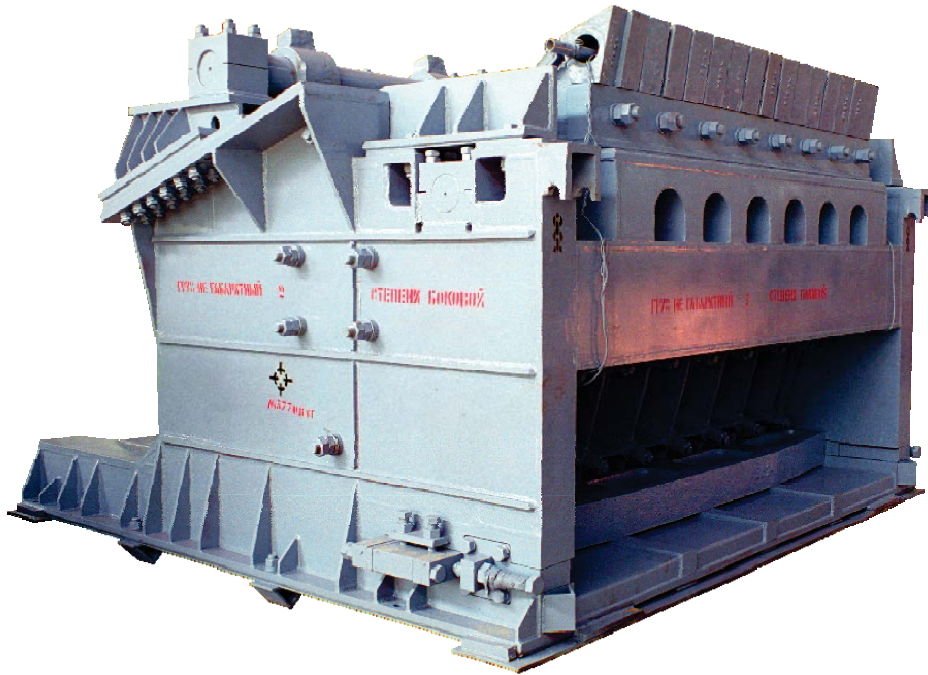
Crushing cone base diameter 2200 mm

Specification

Parameter	Crusher type		
	КСД-1750Г-Д	КСД-1750Гр-Д	КМД-1750Г-Д
Charging slot width at open side, mm	350	275	100
Discharge slot width adjustment range in profile spread phase, mm	30...60	15...30	5...15
Discharge slot width difference in four points, mm	8	6	4
Max. feed lump size, mm	300	250	85
Output with material with ultimate compressive strength of 100-150 MPa and moisture content of 4%, in open cycle, m ³ /hr	360...610	180...360	170...230
Crushing material compression resistance, MPa, max.	320		
Main drive power, kW	250		
Voltage input, V	6000		
Type of current	alternating, 50 Hz		
Dust-proof bearing seal	hydraulic (hydraulic lock)		
Adjustment of discharge slot *	thread-type, mechanized, remote		

*) Crushers can be fitted with manual wedge-type locking of adjusting ring. In this case the crusher weight is reduced by ~ 2 t (for КСД and КМД-1750) and 7 t (for КСД and КМД-2200).

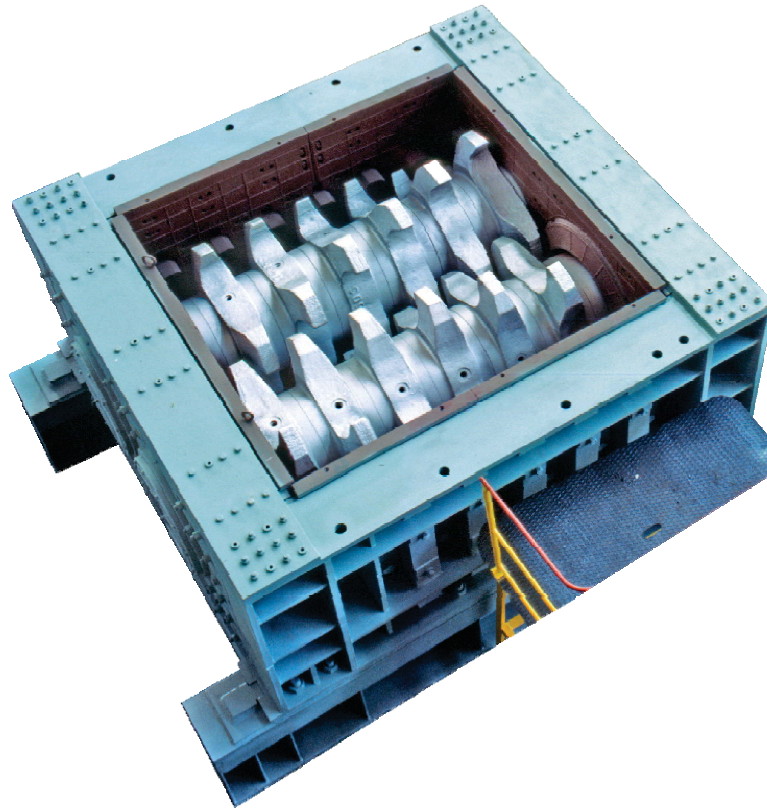
Mining and mineral-processing equipment Jaw crushers



Specification

Parameter	Values for models				
	ДЩ-2,5x9	ДЩ-4x6	ДЩ-4x9	ДЩ-6x9	ДЩГ-7,5x27
Charging door size, mm:					
- width	250	400	400	600	750
- length	900	600	900	900	2700
Discharge slot width, mm	20...60	40...90	40...90	70...130	25...160
Max. lump size, mm	210	340	340	500	2500
Output, m ³ /hr	10...25	10...25	15...35	35...80	210...280
Eccentric rotational speed, rpm	300	310	300	280	
Drive motor:					
- power, Kw	45	45	55	75	55
- rotational speed, rpm	1000	1000	1000	1500	
Overall size with drive, mm:					
- L	3340	2810	3390	3606	5395
- B	2870	2610	2750	3238	3687
- H	1650	2070	2080	2575	2304
Weight (with motor), t	9,6	9,9	12,6	21,2	38,5

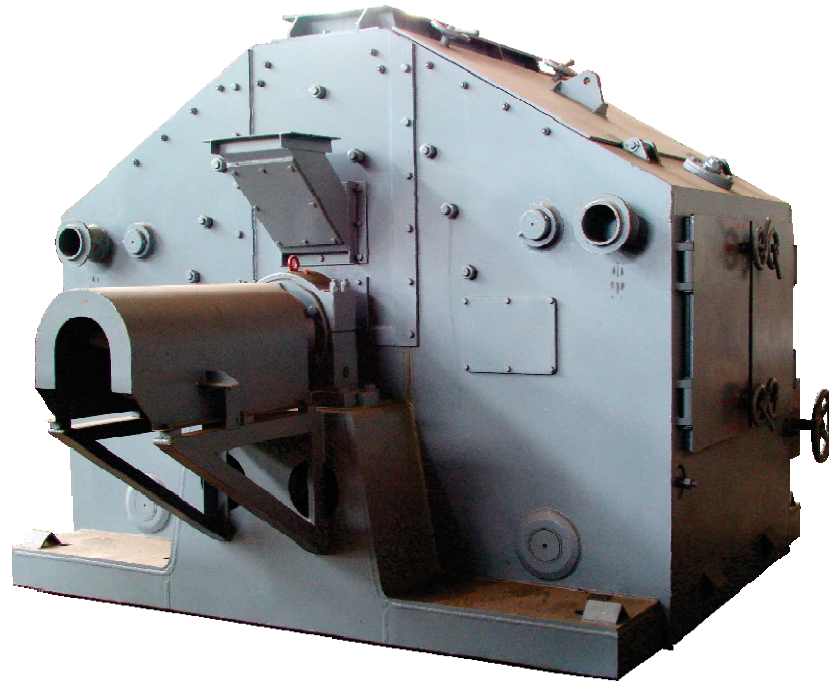
Mining and mineral-processing equipment Auger-type crushers



Specification

Parameter	Values for models				
	ДШЗ-500/140	ДШЗ-1000/320	ДШЗ-1000/320А	ДШЗ-1200/350	ДШЗ-1300/300-Др
Max. lump size, mm	600	1200	1200	1700	1500
Discharge slot width, mm	140	320	320	350	300
Output, m ³ /hr	250	800	400	800	2000
Crushed material ultimate compression strength	up to 150	up to 150	up to 180	up to 180	up to 150
Design weight without spares, t	20,5	95	84	117	120
Drive power, kW	2x132	2x200	2x200	2x315	2x400 (without sync.)
Charging door size, mm	1160x1690	2360x2400	2360x1920	2800x2600	2800x2340

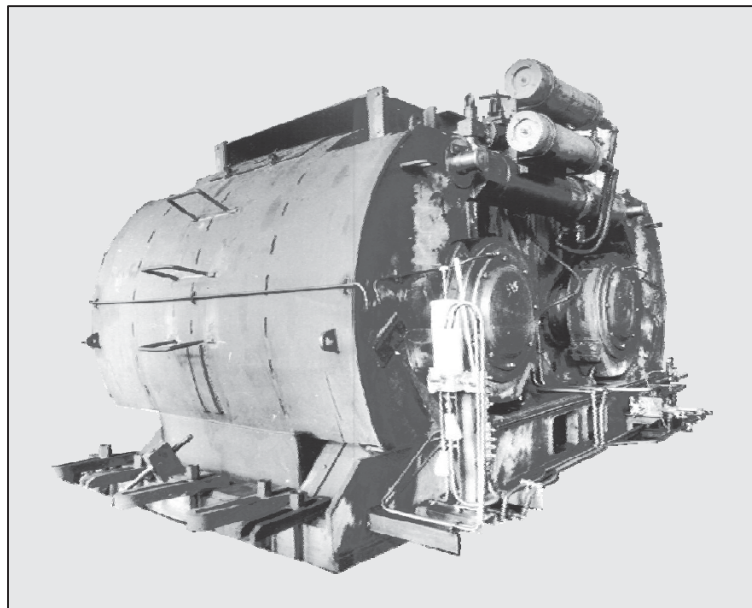
**Mining and mineral-processing equipment
Hammer crushers**



Specification

Parameter	Values for models	
	ДМР-14,5x13	ДМР-1450x1300-1000
Crushed material compression strength, MPa	up to 100	
Output, ton/hr	up to 300	
Charged lump size, mm	up to 80	
Finished product size, mm	0 ... 3	
Rotor size, mm: - diameter (rated) - working section length	1450 1300	
Rotational speed, c ⁻¹ (min ⁻¹)	16,7 (1000)	
No. of hammer longitudinal rows, pcs	10	
No. of hammers, pcs	115	90
Hammer weight, kg	13	16,5
Friction unit lubrication	grease	oil
Motor power, kW	630	
Weight (without motor), kg	22140	20222

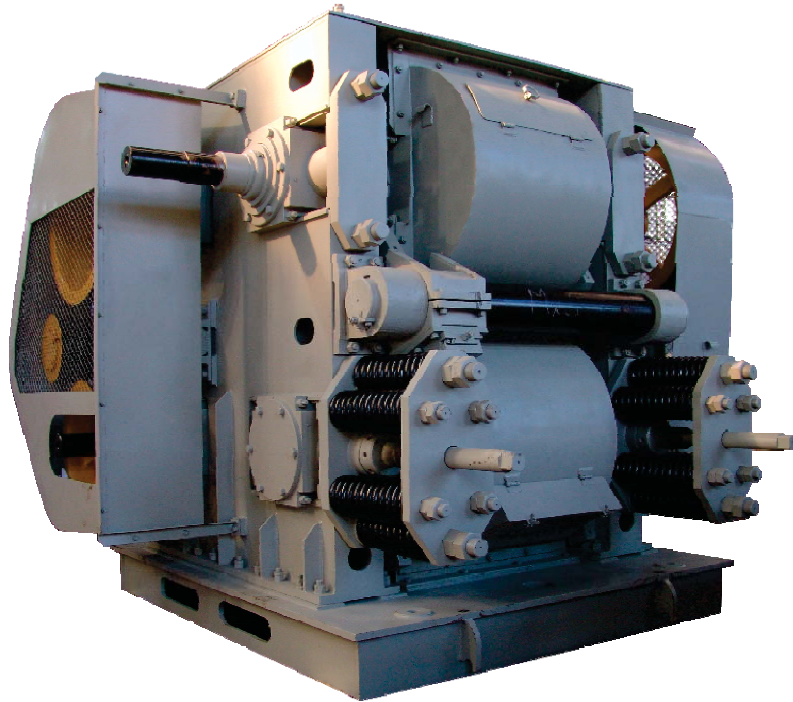
Mining and mineral-processing equipment Double-roll crushers



Specification

Parameter	Values for models
	ДДЗ-1500x1200Г
Roll dia, mm	1500
Roll working section length, mm	1200
Output, ton/hr	
- primary crushing	200 - 450
- secondary crushing	150 - 300
Primary lump size, mm	
- primary crushing	500
- secondary crushing	300
Discharge slot width, mm	
- primary crushing	50 - 150
- secondary crushing	25 - 75
Roll rotational speed, rpm	60-80
Crushed material compression strength, MPa	150
Drive motor:	
- power, kW	2x90
- rotational speed, rpm	985
Screwdown type	hydraulic
Weight (without spares), t	50,5
Overall size (L×W×H), mm	7584x3364x2417

Mining and mineral-processing equipment
Four-roll crushers



Specification

Parameter	Values for models
	ДЧГ-900x700
Crushed material	coke, coal
Charged lump size, mm	up to 40
Discharge slot width, mm	10-2,5
Capacity at max. roll gap, ton/hr	16
Roll dia, mm	940
Roll working section length, mm	700
Roll rotational speed, rpm - top - bottom	61,12/122,2 188,65
Roll drive motor power, kW - top - bottom	30/45 45
Total weight (without spares), kg	26350

Mining and mineral-processing equipment Rotary crushers

Specification of ДР-1200 rotary crusher

Parameter	Values for models
Crushed material	coal
- Crushed lump size, mm: - at inlet - at outlet	400 50 ... 100
Capacity, ton/hr	1200
Rotor speed, rpm	345
Motor power, kW	90
Motor rotor speed, rpm	985
Weight, ton	14,1