

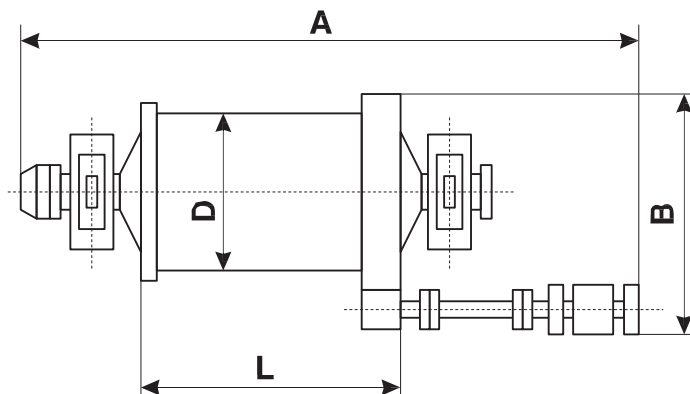
Mining and Processing Equipment Wet Grinding Mills

CENTRAL DISCHARGE BALL MILLS

Specification

Parameters	МШШЦ-2700x3600	МШШЦ-3200x4500	МШШЦ-3850x5500 (on МШШЦ-3600x5500 foundations)	МШШЦ-3600x5500	МШШЦ-4000x5500	МШШЦ-4500x6000	МШШЦ-5500x6500	МШШЦ-5500x7500
Inner shell diameter (without lining), D, mm	2700	3200	3850	3600	4000	4430	5500	5500
Shell length (without lining), L, mm	3600	4520	5500	5500	5510	6010	6730	7520
Rated shell volume, V, m ³ , 5%	18	32	63	49	60	82	140	165
Rated rotational speed of shell, rpm	21	19,72	16,75	16,60	17,20	16,60	13,69	13,69
Degree of shell filling with grinding bodies, %, max	42	42	37	42	42	42	42	42
Main drive motor power, kW	400	900	1250	1250	2000	2500	4000	4000
(Design) power consumption, kW, max	360	720	1200	1110	1610	2200		3950
Overall dimensions of mill assembled with drive through ring gear, mm, max: - length, A - width, B - height, C	9850 6025 4530	14200 7300 5300	16100 7600 5600	15200 7600 5600	15300 8500 6300	16000 9100 6800	* 12380 8800	* 12380 8800
Weight of mill without lubrication and electrical equipment, foundation reinforcement, noise blanking and mechanization devices, grinding bodies (tons, max)	80	139	162	162	235	275	*	650
Specific power consumption, kW/m ³ , max	20	22,5	19	22,6	26,8	26,8	28,57	26,8
Specific weight, t/m ³ , max	4,21	4,34	2,57	3,30	3,30	3,91	3,35	3,93
Network voltage, (Uv), V	6000							

* The mill can be supplied with charging device (A=28150 mm, weight 551 t) or with spiral feeder (A=26100 mm, weight 586 t)

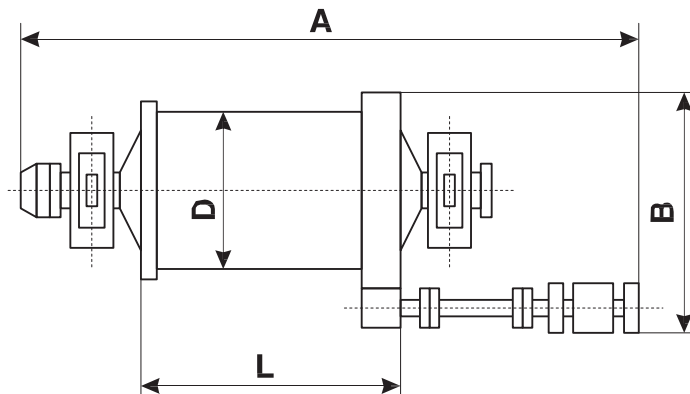


Mining and Processing Equipment Wet Grinding Mills

GRATE BALL MILLS

Specification

Parameter	MШПР-3200x4500	MШПР-3600x4000	MШПР-3600x5000	MШПР-4000x5000	MШПР-4500x5000
Inner shell diameter (without lining), D, mm	3200	3600	3600	4000	4430
Shell length (without lining), L, mm	4520	4000	5040	5010	5010
Rated shell volume, V, m ³ , 5%	32	36	45	55	68
Rated rotational speed of shell, rpm	19,72	18,00	18,50	17,20	16,60
Degree of shell filling with grinding bodies, %, max	45	45	45	45	45
Main drive motor power, kW	900	1000	1250	2000	2500
(Design) power consumption, kW, max	810	930	1080	1750	2260
Overall dimensions of mill assembled with drive through ring gear, mm, max: - length, A - width, B - height, C	14200 7300 5300	14200 7400 5200	15900 7600 5600	14800 8500 6300	15000 9100 6800
Weight of mill without lubrication and electrical equipment, foundation reinforcement, noise blanking and mechanization devices, grinding bodies (tons, max)	153	160	167	245	275
Specific power consumption, kW/m ³ , max	25,3	25,8	24,0	31,8	33,2
Specific weight, t/m ³ , max	4,78	4,44	3,71	4,45	4,04
Network voltage, (Uv), V	6000				

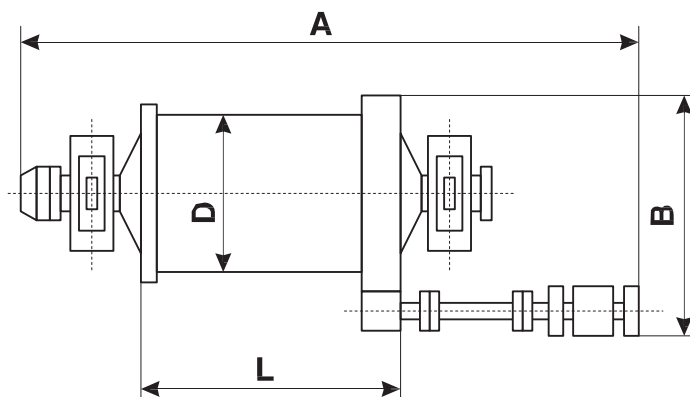


Mining and Processing Equipment Wet Grinding Mills

TRUNNION-TYPE ROD MILLS

Specification

Parameter	MCIИ-3200x4500	MCIИ-3600x4500	MCIИ-3850x4500 (on MCIИ-3600x4500 foundations)	MCIИ-4000x5500	MCIИ-3850x5500 (on MCIИ-3600x5500 foundations)
Inner shell diameter (without lining), D, mm	3200	3600	3850	4000	3850
Shell length (without lining), L, mm	4520	4520	4500	5510	5500
Rated shell volume, V, m ³ , 5%	32	40	47	60	56,5
Rated rotational speed of shell, rpm	14,46	14,66	12,44	13,02	14,3
Degree of shell filling with grinding bodies, %, max	35	35	35	35	33
Main drive motor power, kW	900	1000	1250	1600	1250
(Design) power consumption, kW, max	610	850	1050	1480	1180
Overall dimensions of mill assembled with drive through ring gear, mm, max: - length, A - width, B - height, C	14200 7300 5300	14300 7400 5200	14000 7700 5500	15300 8500 6300	14800 7700 5400
Weight of mill without lubrication and electrical equipment, foundation reinforcement, noise blanking and mechanization devices, grinding bodies (tons, max)	138	153	155	230	175
Specific power consumption, kW/m ³ , max	19,1	21,2	22,3	24,6	20,8
Specific weight, t/m ³ , max	4,31	3,82	3,29	3,83	3,09
Network voltage, (Uv), V	6000				

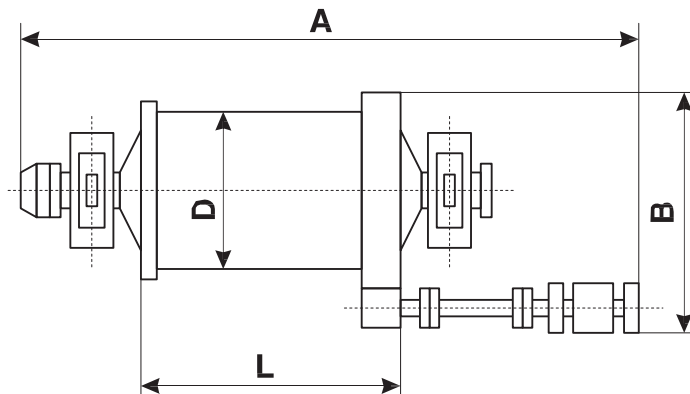


Mining and Processing Equipment Wet Grinding Mills

ORE-PEBBLE MILLS;
GRATE-DISCHARGE BALL MILLS, BEBBLE MILLS, UNIVERSAL MILLS

Specification

Parameter	Ore-pebble mills		Grate-discharge ball mills, pebble mills, universal mills
	MPIГ-4000x7500	MPIГ-5500x7500	МИИПГУ-4500x6000
Inner shell diameter (without lining), D, mm	4430	5500	4000
Shell length (without lining), L, mm	6610	7700	7510
Rated shell volume, V, m ³ , 5%	83	165	83
Rated rotational speed of shell, rpm	16,60	14,88	17,80
Degree of shell filling with grinding bodies, %, max	45		50
Main drive motor power, kW	2500	3150	1600
(Design) power consumption, kW, max	2270		1300
Overall dimensions of mill assembled with drive through ring gear, mm, max:			
- length, A	16000	25850	17300
- width, B	9100	9450	8600
- height, C	6800	8000	6300
Weight of mill without lubrication and electrical equipment, foundation reinforcement, noise blanking and mechanization devices, grinding bodies (tons, max)	285	600	300
Specific power consumption, kW/m ³ , max	27,3	18,18	15,6
Specific weight, t/m ³ , max	3,43		3,61
Network voltage, (Uv), V	6000		



Mining and Processing Equipment Wet Grinding Mills

WET AUTOGENOUS AND SEMIAUTOGENOUS MILLS

Specification

Parameter	Autogenous mills			Semi-autogenous mills			
	MMC-70x23	MMC-9500x2900 (on MMC-9000x3000foundations)	MMC-9000x3000	ММПС-70x70	ММПС-70x52	ММПС-70x42	МПСИ-70x23
Inner shell diameter (without lining), D, mm	7000	9500	9000	7000	7000	7000	7000
Shell length (without lining), L, mm	2300	2900	2960	6700	4900	3000	2300
Rated shell volume, V, m ³ , 5%	80	212	160	240	178	144	80
Rated rotational speed of shell, rpm	13,3	11,1	11,1	12,5	12,5	12,5	12,5
Degree of shell filling with grinding bodies, %, max	-	-	-	10 (110)	10 (82)	10 (66)	10(33)
Main drive motor power, Kw	2000	4000	4000	4000	3150	3150	2000
(Design) power consumption, kW, max	1800	3800	3300	3900	2900	2800	1650
Overall dimensions of mill assembled with drive through ring gear, mm, max: - length, A - width, B - height, C	16672 9140 7856	23646 14450 7850	23500 14350 7750	20423 11245 10364	18623 11245 10364	17623 11245 10364	16672 9140 7850
Weight of mill without lubrication and electrical equipment, foundation reinforcement, noise blanking and mechanization devices, grinding bodies (tons, max)	450	950	870	720	660	620	427
Specific power consumption, kW/m ³ , max	25	20,57	20,63	15,83	16,0	16,2	20,6
Specific weight, t/m ³ , max	5,6	5,36	5,43	3	3,5	4,0	5,33
Network voltage, (Uv), V	6000						

